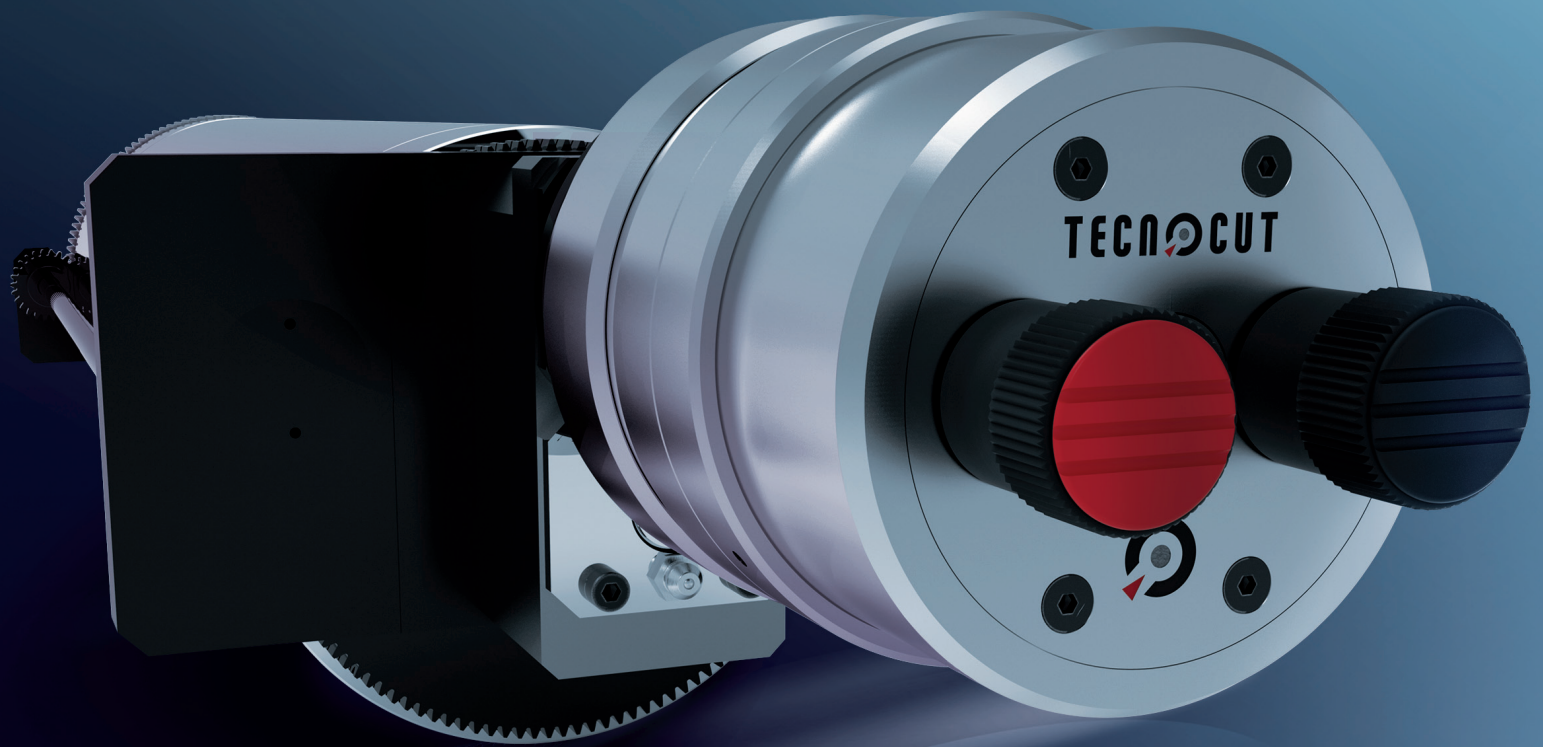


DIFFSYSTEM



THE MOST RELIABLE AND ACCURATE CUTTING SYSTEM

DIFFSYSTEM

The DIFFSYSTEM allows adjusting micrometrically the gap with the magnetic cylinder. It is used instead of the anvil cylinder in the die-cutting station.

The gap dimension can be adjusted in the range of +/-0.15 mm compared to a standard anvil roll.

The adjustment is achieved due the eccentric bearing of the DIFFSYSTEM body which freewheels respect the bearer rings.

Through a regulatory knob on the unit frame, the adjustment process can be performed while the Press is at rest or running.

Unlike the other systems, DIFFSYSTEM allows a much more precise adjustment. It is possible to regulate the operator side and the transmission side individually, as well as both of them at the same time.



Allow the same cutter to run on backing materials that have a different thickness (glassine, kraft or synthetic).

The gap can be adjusted up and down to accommodate a wide range of width materials without changing the cutter.

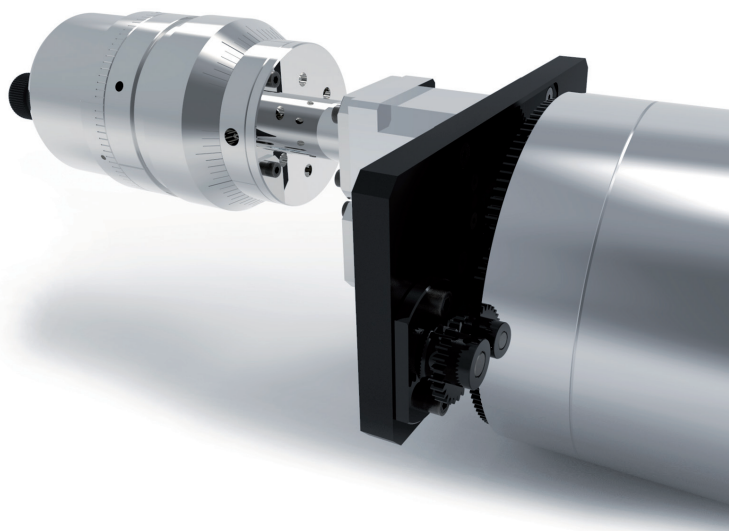
Compensate the die wear and extend the die's life.







Setting control is mounted on the operator side to give easy access to these adjustments.

Drop-in installation. Interchanges simply and easily with standard press anvils with no modification to the die station or press frame.

Adaptable on additional machines of the same type without requiring additional fitting work.

To compensate a non-uniform wear or tool inaccuracies, the gap can be adjusted on one side only.



-  CUTTING PRECISION
-  SPEED ADJUSTMENT
-  EXTENDED LIFE OF MAGNETIC DIES
-  DISAPPEARANCE OF INCIDENCES
-  SPEED OPTIMIZATION
-  CUSTOMER SATISFACTION